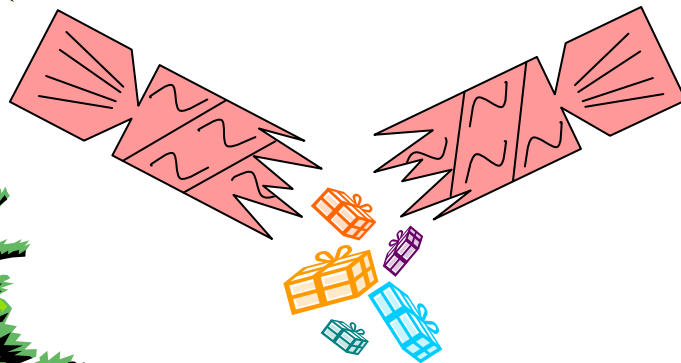


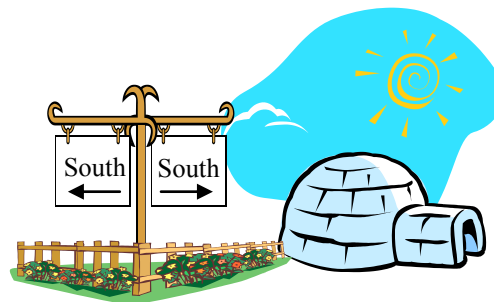
5

# Christmaths Crackers



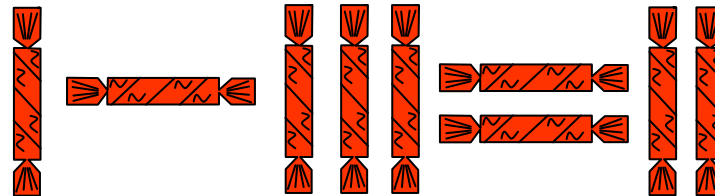
## PRESENT PROBLEM

The five presents in today's cracker have a modal weight of 2 kilograms, a median weight of 4 kilograms and a mean weight of 6 kilograms. The range of the weights is 10 kilograms. Find the weight of each present.



## CRACKER PROBLEM

Make this Roman Numeral equation true by moving just one cracker.



## CRACKER JOKE

What does Santa like to do in his garden?  
Hoe Hoe Hoe  
Ho Ho Ho!

