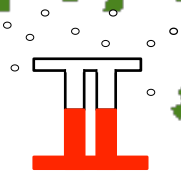


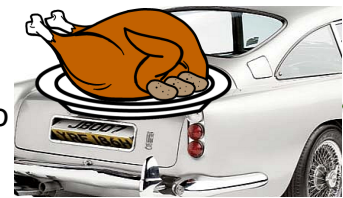


x-maths Bond



November 23rd 8:55am A British School in Rome, Italy

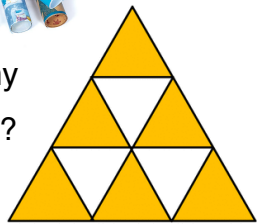
The school inspectre was able to drift into the building without raising any suspicion. With a smile, a confident 'buongiorno!' was all that was needed. To a busy teacher or security guard, he was just another member of the inspection team. He headed straight to room 96 where Miss Connery was about to develop rotational symmetry with her Y7 class - he had certainly done his homework.



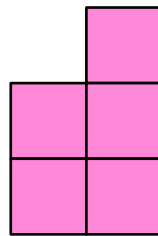
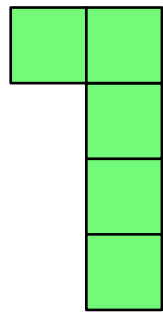
Wrapping Shaper



How many Triangles?



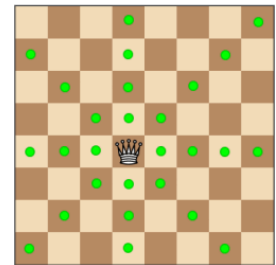
'Good morning students, for your opening challenge try to arrange the following 3 shapes into one shape that has rotational symmetry. Make sure the coloured sides showing remain visible on your solution.'



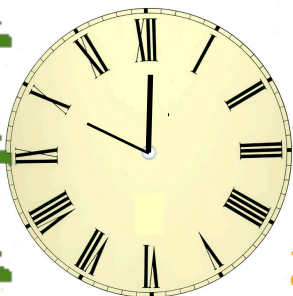
Number Plate

abcde is a 5-digit number.

ab, bc, cd and de are all square numbers.



10am precisely



Jangle Bells

Display Dismay

The first 10 cube numbers are:

27	729	25	8
216	12	343	1
64	1000		



Chess Nuts



Find the maximum number of queens that can be placed on a chess board so that none of the queens attack each other.